



9 Waltham Avenue MILDURA VIC

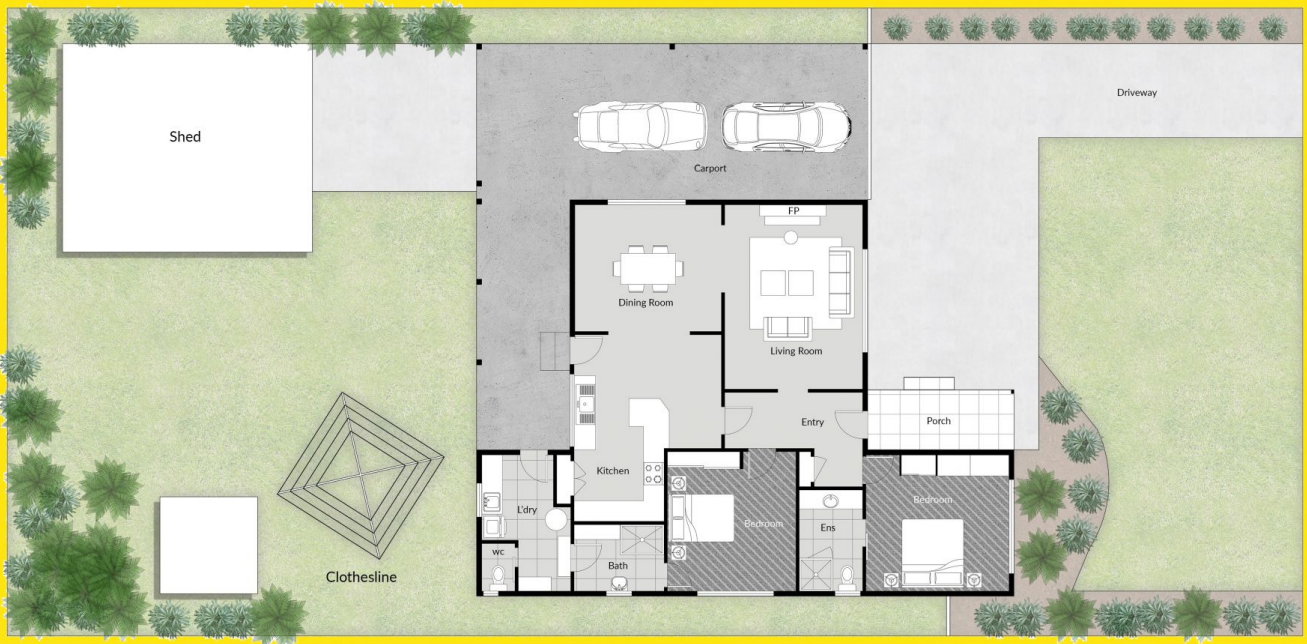
2 2 2

Set on a generous 625m² allotment, this two bedroom home delivers an ideal balance of comfort, space and future potential in a well established Mildura location. With schools, parks, shopping and essential services all within easy reach, this address offers the kind of everyday convenience that makes life simpler and more enjoyable.

Type : House
Price : \$ 415,000
Land Size : 624 sqm
View : <https://www.whydamian.com/sale/vic/north-western/mildura/residential/house/8610381>

For first home buyers, this property represents an affordable and achievable entry into the market without sacrificing land size or location. The layout is practical and welcoming, offering comfortable living spaces and well proportioned bedrooms. A renovated ensuite adds a modern touch, allowing you to move straight in with confidence while still leaving room to add your own style over time.

[For full version visit the website](https://www.whydamian.com)



DISCLAIMER: This siteplan is for illustrative purposes only and may not be to scale. All boundaries, areas, dimensions, fixtures and positioning are approximate and subject to change. Landscaping and external features are indicative only. Interested parties should make their own enquiries and obtain independent advice to verify any information. © Ray White Mildura. All rights reserved. Unauthorised use or reproduction is prohibited.